
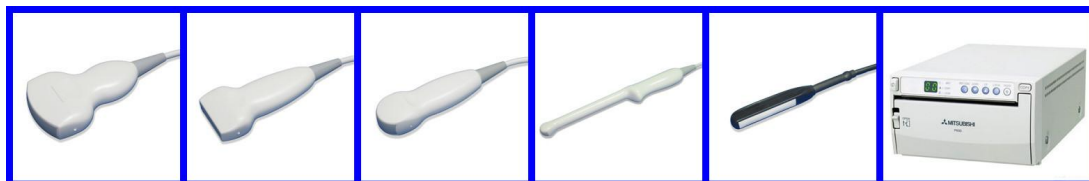




Full-digital Trolley Color Doppler Ultrasound Scanner (YJ-U300T A/B)

Standard Configuration	
	Main unit
	15inch LCD Monitor
	Windows xp system and 64G hard disk
	Convex array probe and one more probe
	English User Manual
	B,2B,4B, B/M, M, B/C display mode
	Print/video/VGA/2 USB ports
	Color doppler, THI, Itouch, PW, CMF, B/C mode
	18 months After-sale Warranty
	Three probe connectors
Optional Items	
Description	
Linear array probe : **USD	
Micro-convex(Cardiac) array probe : **USD	
Trans-vaginal probe : **USD	
Rectal array probe : **USD	
Printer : **USD	

Optional Picture



Model	YJ-U300T Trolley Color Doppler
--------------	---------------------------------------



Forever Medical

www.yongjiumed.com





Forever Medical

www.yongjiumed.com





Forever Medical

www.yongjiumed.com

YJ-U300T

Henan Forever Medical CO., LTD

judy@yjcompany.com

